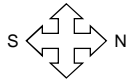
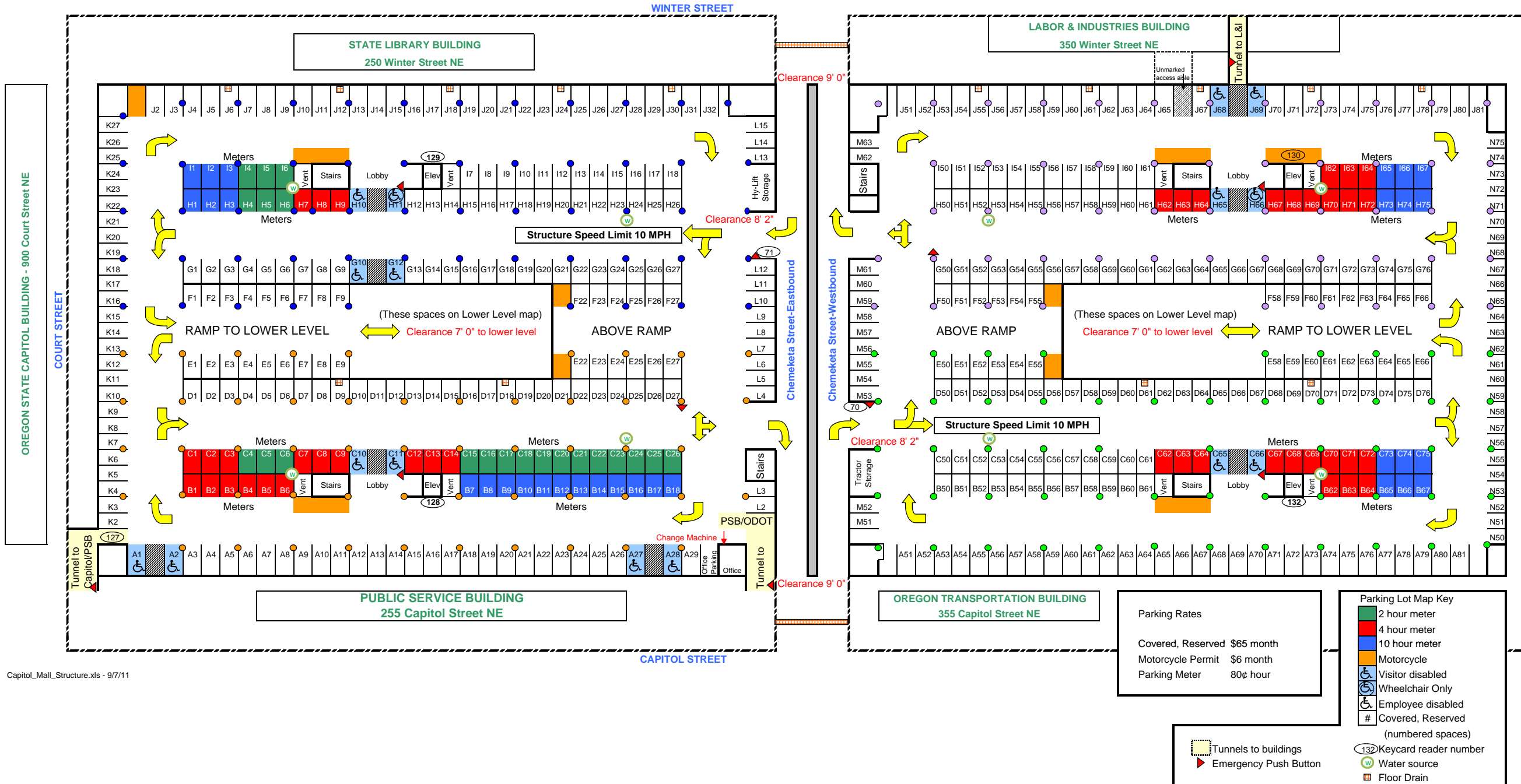


CAPITOL MALL PARKING STRUCTURE UPPER LEVEL - 444
900 Chemeketa Street NE



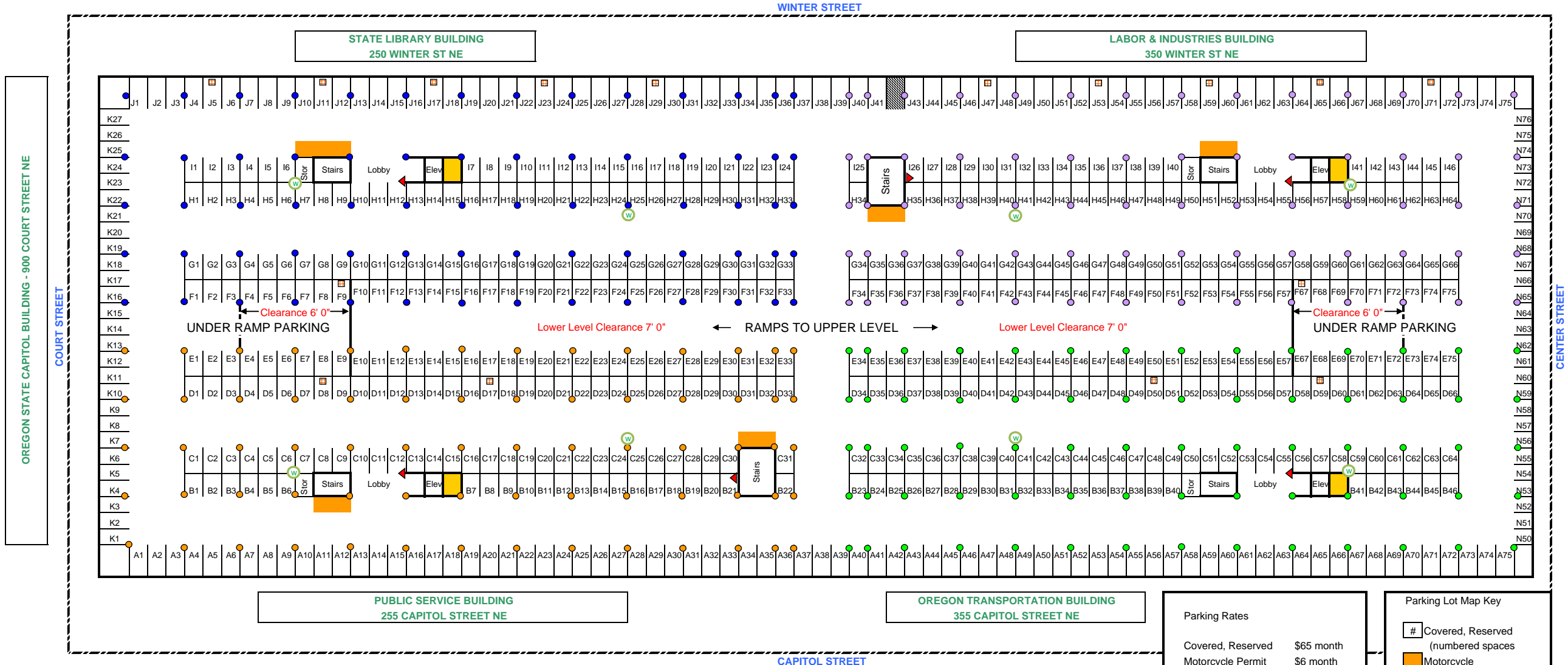
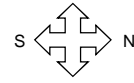
Parking Garage Hours: Doors & Gates, Open 5:30 AM, Close 7:00 PM, Monday - Friday



Parking Rates Covered, Reserved \$65 month Motorcycle Permit \$6 month Parking Meter 80¢ hour		Parking Lot Map Key 2 hour meter 4 hour meter 10 hour meter Motorcycle Visitor disabled Wheelchair Only Employee disabled # Covered, Reserved (numbered spaces) 132 Keycard reader number w Water source Floor Drain
---	--	--

CAPITOL MALL PARKING STRUCTURE LOWER LEVEL - 555
900 Chemeketa Street NE

Parking Garage Hours: Open 5:30 AM, Close 7:00 PM



Parking Rates

Covered, Reserved	\$65 month
Motorcycle Permit	\$6 month
Bicycle Room	\$11 year

Parking Lot Map Key

- # Covered, Reserved (numbered spaces)
- M Motorcycle
- B Bicycle Room
- PB Emergency Push Button
- FD Floor Drain
- W Water Source